

# Rigby, Idaho Birthplace of TV

See how it all began at the  
Farnsworth TV & Pioneer Museum.

Philo T. Farnsworth was born in a log cabin near Beaver, Utah in 1906. At an early age, his family moved to Rigby, Idaho. As early as age thirteen, the inventive genius had received national recognition for his work with mechanical and electronic devices. At age 16 and a student at Rigby High School in 1922, Philo conceived the idea of an "Image Dissector" tube, making television possible by dividing the image into parallel lines. He's said to have gotten the idea while looking at a freshly plowed field near the high school. He perfected the first modern television system using a high-speed electronic scanner.

Over 125 patents have been issued to Philo, a testimony to his many contributions that include perfection of radar and development of an apparatus for producing Nuclear Fusion Reactions.



118 W. 1st St.  
in Rigby

Tues – Sat  
1 – 5 pm

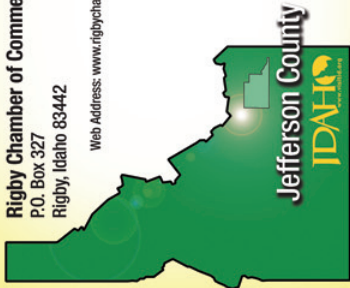
745-8423

Rigby Chamber of Commerce

P.O. Box 327

Rigby, Idaho 83442

Web Address: [www.rigbychamber.com](http://www.rigbychamber.com)

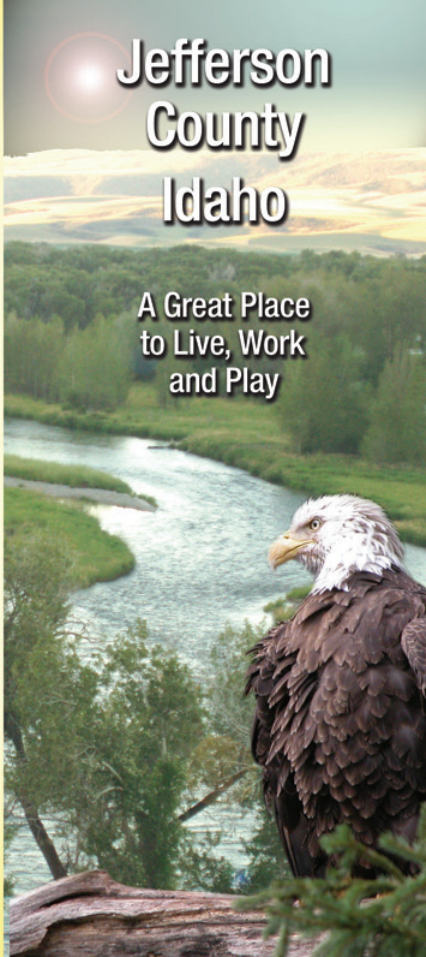


Paid Idaho Travel Council  
Printed in the USA for  
ITC/IDC; ITCG 05-VI-5 10M

For more information on Idaho call 1800-VISIT-ID

# Jefferson County Idaho

A Great Place  
to Live, Work  
and Play



# Sign Language

# Jefferson County

WELCOME TO  
JEFFERSON COUNTY  
LAKE

CLOSED AFTER 11:00 PM.  
EXCEPT OVERNIGHT  
CAMPING

All Signs Indicate  
Jefferson County  
will Experience  
Tremendous Growth  
Over the Next Decade

Business is Booming,  
There's Always Something  
to see and do... and  
it's a great place  
to settle down



## Golf Courses

Jefferson Hills

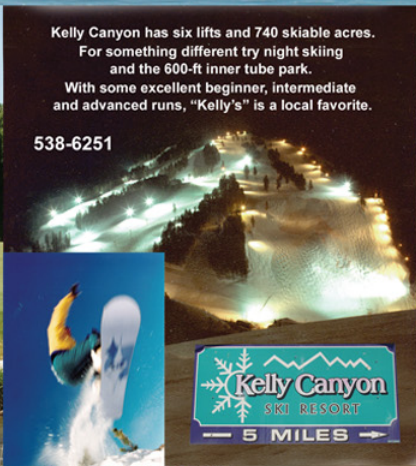
745-6492

Cedar Park

745-0103

Heise

538-7944



Kelly Canyon has six lifts and 740 skiable acres.  
For something different try night skiing  
and the 600-ft inner tube park.

With some excellent beginner, intermediate  
and advanced runs, "Kelly's" is a local favorite.

538-6251

**Kelly Canyon**  
SKI RESORT  
5 MILES



Heise Hot  
Springs is  
a year-round  
resort with hot  
mineral pools, a water  
slide, par 3 golf, fishing  
outfitters, an RV park and  
a pizza parlor.

538-7312

**HEISE HOT  
SPRINGS**  
Year-Round Swimming  
and Relaxation  
7-N RANCH 15 MI



# MOUNTAIN RIVER Ranch

Sleigh and wagon rides,  
great food & a dinner show,  
RV Camping and  
a whole lot of fun.

538-7337



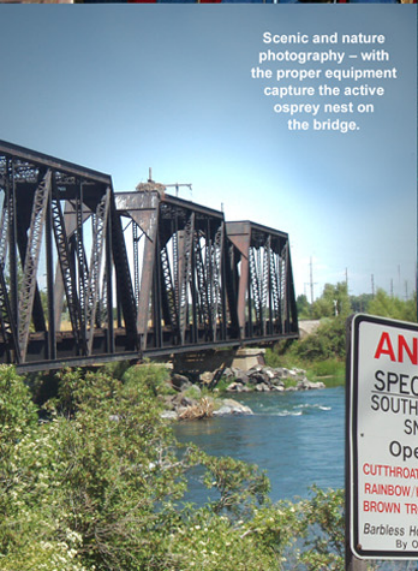
With go karts, bumper boats,  
rock climbing, miniature golf  
and more, Riot Zone is a  
"RIOT" for the entire family!

GO - KARTS • MINI GOLF & MORE!  
NOW OPEN  
MON - THUR 10 AM - 11 PM  
FRI - SAT 10 AM - 12 PM

745-5115



FPO  
(photo coming)



Scenic and nature  
photography – with  
the proper equipment  
capture the active  
osprey nest on  
the bridge.

## For More Information

Contact the Jefferson County  
Economic Development Council  
208-745-0868

or Contact the  
Rigby Chamber of Commerce  
208-745-8701



The South Fork of the Snake River  
offers world class fishing for  
native cutthroat and record  
brown and rainbow trout.  
Recent regulation changes  
have made it even easier  
to catch the fish of  
your dreams.



– Jefferson County –  
*Nearly There to Wherever  
 Your Vacation Destination*



## Events

### March

Farmers / Merchant  
 Banquet

### April

Easter Egg Hunt – Rigby,  
 Roberts, Hamer, Menan,  
 Ririe

### June

Stampede Days  
 Rotary Breakfast

### July

Lions 4th of July  
 Celebration  
 Menan 4th of July

### August

Jefferson County Fair  
 West Jefferson County Fair

### October

Snowmobile Swap Meet

### November – March

Cutter Races

### December

Lighted Parade with Santa



## Demographics

Population - % Male: 50.6  
 Population - % Female: 49.4  
 % White: 91.8  
 % Black: 0.3  
 % American Indian or  
 Alaska Native: 0.5  
 % Asian/Pacific Islander: 0.3  
 % Some Other Race: 7.1  
 % Hispanic: 10.4  
 Median Age: 29  
 Average Household  
 Income: \$47,340  
 Median Household  
 Income: \$36,210  
 Per Capita Income: \$14,716  
 % High School  
 Graduates+ - 2000: 84.4  
 % Bachelor's  
 Degree+ - 2000: 15.2  
 source: 2002 estimates – Idaho Works  
 profile, County Profile, Idaho  
 Department of Commerce

## Mission Statement

"To foster positive and stable  
 economic growth that will  
 increase living-wage jobs and  
 support quality of life and  
 unity in Jefferson County."

## Households

Total Households: 6,093  
 Household Size:  
 1 person 922  
 2 persons 1,799  
 3 persons 980  
 4 persons 944  
 5 persons 639  
 6+ persons 809  
 Average Household Size: 3.2  
 Percent with Children: 42.1  
 Percent with No Children: 30.0  
 0 vehicles: 3.1  
 1 vehicle: 20.0  
 2+ vehicles: 76.9  
 Median Housing  
 Value 2000: \$91,900  
 Owner Occupied (%): 78.8  
 Renter Occupied (%): 13.3  
 source: 2002 estimates – Idaho Works  
 profile, County Profile, Idaho  
 Department of Commerce



See [www.jeffersoncountyed.org/aboutcounty.htm](http://www.jeffersoncountyed.org/aboutcounty.htm)  
 to find out more about Jefferson County Demographics.

## Labor/Workforce

Age 16+: 13,445  
 Employed (%): 61.7  
 Unemployed (%): 4.4  
 In Armed Forces (%): 0.1  
 Not in Labor Force (%): 33.5  
 source: 2002 estimates – Idaho Works  
 profile, County Profile, Idaho  
 Department of Commerce

## Population

Total Population 2002: 19,781  
 Population Per  
 Square Mile 2002: 18.1  
 Population  
 Change (%) 2000 - 2002: 3.3  
 Percent Rural 2000: 81.2  
 Percent Urban 2000: 18.8



## Taxes – Property Taxes

Net Taxable Market Value - 2002 \$607,528,278  
 Property Taxes Budgeted - 2002 \$7,832,512  
 Property Tax (% of market value - 2002)  
 Urban 1.84431  
 Rural 1.17106

\*after homeowner exemption

Travel & Convention Room Tax (2%) Total Sales Tax Receipts  
 FY 1996 \$102,363 \$951  
 FY 1998 \$321,067 \$4,843  
 FY 2000 \$558,765 \$9,632  
 FY 2002 \$572,933 \$10,474

source: Idaho County Profile, Idaho Department of Commerce

